



TIRUPATITM
INTERNATIONAL



www.tpaper.in

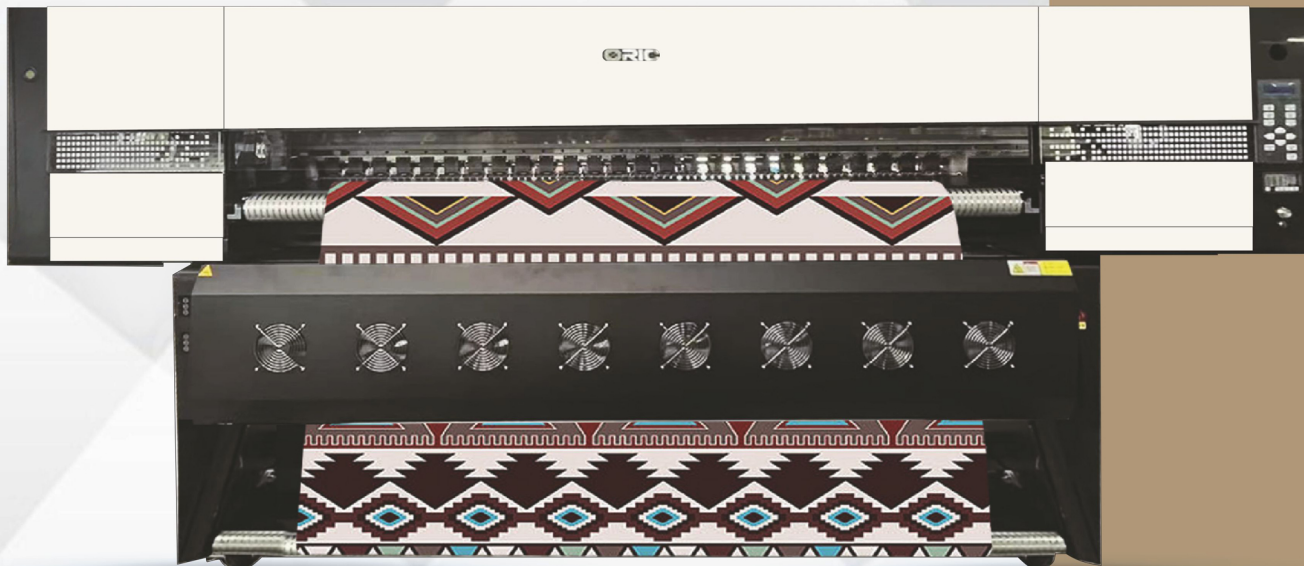
Dye Sublimation Printer

(Equipped with negative pressure ink supply system and mute linear motor system)

(12 HEADS)

Production

1 PASS - 7200 Mtrs/Day

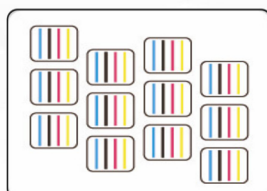


Tx-12



Sublimation Ink

12*3200 Heads
CMYK



720x600dpi - 1pass

540 m²/h

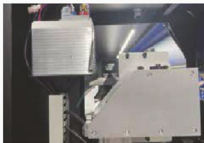
720x1200dpi - 2pass

298 m²/h

Both the sublimation and direct-to-textile printers are examples of our expertise and engineering top performing, reliable and precise. With the TIRUPATI series printer, you can maximize productivity while controlling quality and minimizing cost for beautiful soft signage, apparel, and interior decor items that will set your business apart from the competition. Wide application in clothing, home decoration fabric, samplings, shirt canvas bags, bolster scooter, flags, textile gadgets, etc.



Mute Linear Motor System, no belt, no pvc encoder strip, Increase the Carriage moving precision and Span life



200W DC servo motor has good stability and long service life



Negative pressure ink supply system: good for long time printing and cleaning



Filter: Combined with negative pressure ink supply system, filtering ink and air impurities



Lack-of-media sensor



The air shaft media system supports 3000m or 10,000m media roll



Up-down tension control



2 external infrared drying units

● TECHNICAL SPECIFICATIONS

Model		TX-12
Print Head		12*3200 Print Heads
Droplet Size		3.5pl
Printing Width		74.8 in. (1900 mm)
Printing Speed		1pass(720x600dpi): (540 sqm/h) 2pass(720x1200dpi): (298 sqm/h)
Ink Cartridges		Dye Sublimation Ink Siphon + Automatic Ink Replenishment CMYK (6colors or 8colors Optional)
Print Media		Heat Transfer Paper
Print media control		Air Shaft Automatic Take-up
Dryer		External Automatic Air Heat Intergrated Dryer
Moisturizing unit		Automatic Cleaning and Moisturizing Integrated Captop
RIP Software		Neostampa 8.9
File Format Supported		JPG / TIFF / PDF, etc
Computer Configuration	Operating System	win7 64 bit / win10 64 bit
	Hardware Requirements	CPU: i7 Processor (9th generation or higher) Hard Disk 500g+ (solid state disk) Operating Memory 16g, Graphics Card : ATI display 4G memory, Motherboard: ASUS, Gigabyte
	Data transmission	USB3.0
Power requirement	Input Voltage	AC 220 V+ 5%, 16A, 50 HZ+1
	Printer Drying unit power	2500W Maximum 8kw
Dimensions(with stand)		3670(W)x750(D)x1850(H) mm
Package Dimensions		3500(W)x750(D)2150(H) mm
Package Weight		800kg
Working Environment		Temperature 15-32 degree C, Humidity: relative humidity : 40-70 (non condensing)
Standard Components		External Automatic Air Heat Integrated Dryer, Low Ink Alarm System, Air Shaft Media Loading and Take-up, and Automatic Moisturizing and Cleaning Init

CONTACT US

 +91 82384 33322	 +91 99788 00900	 +91 75738 33322	 +91 99788 12212
---	---	---	---

✉ sublimationtpaper@gmail.com

PLOT NO - 2, T.P - 48 OPP. SAI UNITY RAW HOUSE, NEAR S.M.C SCHOOL,
BHESTAN, SURAT - GUJARAT - INDIA - 395023